



AMALA COLLEGE OF NURSING

AQAR (2022-2023)



CRITERION 1 – CURRICULAR ASPECTS

Key Indicator 1.1 – Curricular Planning and Implementation

Metric No. 1.1.1 - The Institution ensures effective curriculum planning, delivery and evaluation through a well-defined process as prescribed by the respective regulatory councils and the affiliating University.

SUBMITTED TO



National Assessment and Accreditation Council



Academic Monitoring Cell Hand Book



Kerala University of Health Sciences

KERALA UNIVERSITY OF HEALTH SCIENCES



Academic Monitoring Cell

HAND BOOK

2018

THRISSUR - 680 596

Website: www.kuhs.ac.in

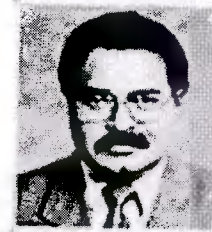
E-mail: academicmonitoringcell@kuhs.ac.in

Phone: 0487- 2207751



CONTENTS

No		Page
1.	Messages	
	• Vice-Chancellor	3
	• Pro Vice-Chancellor	4
	• Registrar	5
	• Controller of Examinations	6
2.	Introduction	7
3.	Concept of Academic Monitoring	9
4.	Criteria-Domains and Sub-domains	11
5.	Institutional Interface	20
6.	Annexures	27



MESSAGE FROM THE VICE CHANCELLOR

Academic Monitoring Cell (AMC) is an important initiative in strengthening the academic structure of the University. It is a proactive intervention to promote academic excellence in the affiliated institutions. It is hoped that this program will instil renewed enthusiasm in the academic scenario of the University.

I am expressing my deep sense of appreciation for the sincere efforts of all those who participated in the process.


Prof. [Dr] MKC Nair

Vice Chancellor


Kerala University of Health Sciences



MESSAGE FROM PRO-VICE CHANCELLOR

I am extremely happy to note that the Academic Monitoring Cell (AMC) of Kerala University of Health Sciences is being made operational. As the Chairman of the AMC I am sure that this will strengthen the academic frame work of the University.

I congratulate all the persons involved in the formulation and implementation of the program. I also **express** my thanks to the members of the Sub-Committee of Academic Council for their valuable suggestions and contributions.



Dr. A. Nalinakshan
Pro-Vice Chancellor
Kerala University of Health
Sciences



MESSAGE FROM REGISTRAR

It is gratifying that an Academic Monitoring Cell (AMC) of Kerala University of Health Sciences is coming to existence. It is hoped that this will strengthen the academic support system of the University.

This has been formulated after extensive discussions in the academic bodies and approved by the Senate. This book is intended to act as a guideline for effective implementation of AMC. I hope that the affiliated institutions will find this program academically beneficial and will result in further excellence.


Dr. M.K. Mangalam
Registrar
Kerala University of Health Sciences



MESSAGE FROM CONTROLLER OF EXAMINATIONS

I am pleased to note that the KUHS Academic Monitoring Cell (AMC) is ready for functioning. I hope that this handbook will help in its effective functioning. I congratulate the entire team involved in this herculean task.

Prof. Dr. P.K. Sudheer
Controller of Examinations
Kerala University of Health Sciences

Persons involved in the preparation of this document Statutory Officers of KUHS

Prof. Dr. M K C Nair (Vice Chancellor)
Prof. Dr. A.Nalinakshan (Pro Vice Chancellor)
Prof. Dr. M K Mangalam (Registrar)
Prof. Dr. P K Sudheer (Controller of Examinations)
Prof. Dr. V V Unnikrishnan (Dean Academic)
Prof. Dr. G S Harikumar Nair (Dean Research)
Prof. Dr. A K Manoj Kumar (Dean Student Affairs)

Deans of Faculty

Dr. Thomas Manjooran.S, Dean Faculty of Dental Science
Dr.C.K. Krishnan Nair, Dean Faculty of Ayurveda
Dr.S. Sankar, Dean Faculty of Allied Health Sciences
Dr. Valsamma Joseph, Dean, Faculty of Nursing
Dr. Sunil Raj P., Dean Faculty of Homoeopathy
Dr.K. Mohanan, Dean Faculty of Medicine
Mrs. Mary Mathew, Dean Faculty of Pharmaceutical Science

Office of Dean (Academic)

Smt. P. O. Aliamma, Assistant Registrar
Shri. Joy M U, Section Officer
Smt. Simi Mol S A, Assistant
Smt. Vibitha V V, Assistant
Smt. Prabha T, DEO


IT Section

Shri. Harilal K, Systems Manager
Shri. Geo Joseph James, Hardware Technician
Shri. Prakash Joseph, Programmer
Shri. Anil V F, Programmer
Shri. Harikrishnan P V, Programmer

Preface

It is a privilege to introduce the concept of Academic Monitoring into the Academic environment of Kerala University of Health Sciences. Academic Monitoring is fundamental to the effective functioning of the system in order to ensure qualitative and functional uniformity of the outcomes. An effective monitoring system will serve as a sentinel in the upkeep and maintainance of quality and is aimed at achieving excellence.

The KUHS has devised the system in a paper- less manner as a result of IT enabling. The software for this was indigenously developed by the IT Section of KUHS, who deserve full credit. In this context I wish to thank the Hon'ble Vice Chancellor Prof. Dr. M K C Nair, Pro-Vice Chancellor Prof. Dr. A Nalinakshan, Registrar Prof. Dr. M K Mangalam and Controller of Examination Prof. Dr. P K Sudheer and fellow Deans Dr. G S Harikumaran Nair and Dr. A K manojkumar along with my academic colleagues for their unstinted support and guidance. I also thank the staff members of KUHS who extended support for this initiative. It is hoped that the AMC system will be a significant step towards academic excellence of the University in the years to come.


Dr. V V Unnikrishnan
Dean (Academic)

Introduction

One of the fundamental functions of a University is to provide specific guidelines regarding teaching, Learning and assessment and ensuring that these are properly materialised.

The Kerala University of Health Sciences is committed to ensuring and upholding the quality of health science education in its affiliated Institutions. It has a vision based approach in this regard, whereby the various processes are implemented in a system based and time-bound manner.

As part of this vision, Course Regulations were Gazetted in a time- bound manner and the entire syllabi of

Courses under the University were thoroughly reviewed in the academic year 2016-17. However, there are several reported instances where the Regulations, Syllabi and University Orders of Academic nature are not implemented in time by the concerned institutions. This has often resulted in genuine difficulties, and consequently, complaints from the students regarding these have been received. As a result, Examinations had to be postponed predisposing to course lag.

The examination Regulations have been readied for Gazetting. The KUHS undertook an extensive initiative to collect and document the basic data regarding the faculty members of institutions affiliated to KUHS and linked these

to their AADHAR and PAN numbers after verifying the original documents. The University's Schools, Academic Staff College & Centres have started functioning. One-year Certificate Programs for affiliated Faculty Members to enhance their perspectives in areas outside their specialities have already become a huge success

The natural progression is to ensure that the academic regulations, syllabi and other guidelines of the university are implemented by the affiliated institutions in letter and spirit. There should be a healthy dialogue between the University and its affiliated institutions. Only then the great ideals envisioned in the KUHS Act 2010 will be reaching their culmination.

As per KUHS Act 2010, Chapter II.6 (xx) the University has to monitor and evaluate the academic performance of the affiliated institutions. At present, we have no adequately effective mechanism to monitor the academic activities. Accordingly, the matter was presented to the 17th Academic Council. As per the Decision 17.10, the Academic Council decided to constitute an Academic Monitoring Cell with Pro Vice Chancellor as Chairman, Dean (Academic) as Convener and Deans of Faculties as members.

The Academic Council also resolved to authorize the Hon'ble Vice Chancellor to nominate Chairman of Board of Studies or member of Board of Studies/Member of Faculty as special invitees to the Academic Monitoring Cell on case to case manner for matters discussed by the Academic Monitoring Cell (AMC).

This Decision of the Academic Council was approved vide Decision 42.21 of the 42nd Governing Council.

Objectives of AMC

1. To formulate a fair and objective System for the functioning of the Academic Monitoring Cell of the University.
2. To develop scientific criteria and strategies for its effective implementation

Structure of the AMC

The Academic Monitoring Cell is envisaged as a two tier system (Annexure I).

TIER-I

The first tier is the Institutional Academic Committee (IAC) of the Institution. It consists of the Principal (Chairman), Vice-Principal (Co-Chairman), Heads of Departments, Unit Chiefs, Course Co-ordinators and Co-ordinators of the House Surgeoncy and PG Programs as members. This Committee will meet periodically and make an objective assessment of the ongoing Academic Programs including examinations taking place in the Institutions with special regard to the Regulations, Syllabi and such other guidelines of the University. The committee will take necessary steps to rectify defects and inadequacies if any. Periodical reports will be filed electronically (online) to the KUHS AMC as the Institutional Academic Committee Report (Internal Academic Audit Proforma) twice a year.

From a practical point of view each Head of Department shall ensure that the academic programs are planned, implemented and documented in the manner envisaged in the Regulations and Syllabus of KUHS and reported to the Institutional Academic Committee in a regular manner and compiled for submission in the electronic format to the University

TIER-II

This is the AMC situated at the KUHS Head Quarters. The structure is as follows.

Chairman: Pro-Vice Chancellor,

Convener: Dean (Academic)

Members: Deans of Faculties

Special Invitees: Dean (Research), Dean (Student Affairs)

The AMC will receive the periodical reports from the affiliated Institutions through a dedicated portal. A software has been developed indigenously for this purpose by the IT Department of KUHS. It will generate a detailed report as and when the data is received from the institutions. The Institutions in turn can generate a receipt once the report has been filed. These Bi-Annual AMC reports shall be mandatory for the continuation of affiliation in future. KUHS may constitute a team and conduct Academic Inspections to the Institutions, randomly selected, to physically verify the activities shown in the reports. These Academic Inspections will be of non-punitive nature and proactive, meant to give broad guide lines and directions to rectify the deficiencies and lacunae in the implementation of KUHS Academic Programs and Directives. It will also take into account the achievements and unique initiatives of the institutions as part of recognising excellence. The AMC will report to the Vice Chancellor and to the Academic Council through him.

Criteria for AMC

The committee constituted for developing criteria for AMC identified five major domains and 35 sub domains. These are given below as tabular column.

INTERNAL ACADEMIC AUDIT PROFORMA

for the period from April to September/ October to March Course.....

[Submit one Proforma for each Course/Program of the Institution] Semester/year.....			
Domains	Parameters	Yes	No
1. TRAINING	Whether		
	1. Master Time Table Published 2. Annual Academic Plan is prepared 3. Monthly Academic Plan is prepared 4. Monthly Academic Report is prepared 5. Theory & Practical/Lab/Clinical work Status is satisfactory 6. Student Projects are progressing as per schedule 7. Professional / Industrial Interaction conducted [wherever applicable] 8. Library usage is adequate 9. Net Based Learning is being practiced 10. Community Academic Programs are progressing as per schedule		

Domains	Parameters	Yes	No	Details if relevant
2. FACULTY DEVELOPMENT & STUDENT ASSESSMENT	Whether 1. Internal assessment is conducted as per schedule 2. Pass percentage in University Examinations [wherever applicable] 3. There are University Toppers [wherever applicable] 4. Institutional Academic Calendar is published 5. Continuing Educational Programs were conducted [wherever applicable] 6. Seminars, Workshops, Conferences or others were conducted 7. Teachers were elected as Office Bearers of Professional Bodies 8. Programs in Educational Technology were conducted			
3. STUDENT WELFARE	Whether conducted / implemented 1. Co-Curricular Activities & Extra-Curricular Activities 2. Placement programs [wherever applicable] 3. Programs for dealing with Poor Performers [Scholastic Backwardness] 4. Quality assessment of Classrooms, Labs, Clinical classes as per specifications 5. Quality assessment of Common Rooms, Transportation, Toilets, Canteen 6. Mentoring / Tutorial System 7. Grievance Redressal Programs			

Domains	Parameters	Yes	No	Details if relevant
4. KUHS PARAMETERS	Whether: 1. Faculty Qualification & Numbers are adequate 2. Academic Staff College Training status of Faculty are adequate 3. Periodical Institutional Faculty Appraisal Programs are implemented 4. Faculty Development Programs are conducted 5. Disciplinary issues of Students/Faculty if any [give details]			
5. INSTITUTIONAL EXCELLENCE	Whether 1. Vision & Mission Statements of the Institution is displayed 2. There were any Awards & Achievements for the Institution [Details] 3. There were any Research, Publications, Patents, Projects of the Institution [Details] 4. There were any Accreditations: University/NAAC/NABH/ NABL/ NBA/ ISO Institution [Details] 5. There were any Funded Research projects			

Each of the above domains and sub-domains are explained in detail below:

1. Training

It is the teaching –learning processes including assessments taking place within the institution. Various parameters which are measurable have been included here.

1.1. Master Time Table

It is the time table for the whole academic year for each course which is to be kept in the office of the Principal/ Head of the Institution. It will also indicate the examinations (internal and University examinations) and the holidays/vacation if any. This will enable the Head of the Institution to monitor the Academic Activity real time. Publication of this master time table will help the teachers and the students to prepare their Academic Schedules in advance.

1.2. Annual Academic Plan

It is the outline of the Academic Programs proposed to be conducted in the next Academic Year in the various departments of the Institution. It includes theory, practicals, Clinicals, Seminars and CMEs

1.3. Monthly Academic Plan

It is the outline of the Academic Programs proposed to be conducted in the various departments of the Institution presented in the ensuing (next) month.

1.4. Monthly Academic Report

It is the report of the Academic Programs conducted in the previous month in the various departments of the Institution. It should indicate whether the monthly academic plan in 1.3 has been implemented. If not reasons should be given.

1.5. Theory & Practical/Lab/Clinical work Status

The following criteria are to be followed

Theory:

- Comprehensive coverage of KUHS syllabus
- Timely Completion of topics
- Conduct of internal Assessment Examinations
- Timely publication of results

Remediation programs and interventions based on internal Assessment

Practical/Lab/Clinical work Status:

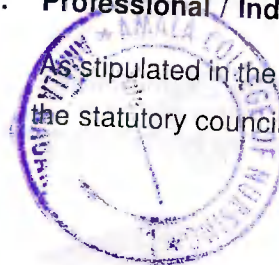
- Comprehensive coverage of KUHS syllabus
- Timely Completion of topics
- Timely conduct of practicals and clinical classes
- Adequate lab facilities and staff
- Adequate teacher student ratio

1.6. Student Projects

Student project work may be optional or as stipulated in the syllabus. This should be guided by appropriate teachers and made ready for assessment.

1.7. Professional / Industrial Interaction

As stipulated in the syllabus or otherwise specified by the statutory councils.



1.8. Library usage

The central library and departmental libraries may be used adequately. Reprographic facilities are to be utilised. Library timing are to be displayed and the services of the librarian provided.

1.9. Net Based Learning

Internet facility with adequate speed should be provided. National Knowledge Network (NKN) may be provided wherever applicable.

1.10. Community Academic Programs

Programs as stipulated by the KUHS syllabus or independent institutional initiatives if applicable.

2. FACULTY DEVELOPMENT & STUDENT ASSESSMENT

2.1. Internal assessment

The following parameters are to be observed

- a. Number of internal assessment examinations conducted
- b. Timely publication of results
- c. Objectivity of the examinations
- d. Whether KUHS model has been followed
- e. Remediation programs and interventions based on internal Assessment

2.2. Pass percentage in University Examinations

- a. Number of students registered for examinations

- b. Number of students appeared for examinations
- c. Pass percentage
- d. Number of first class and Distinctions
- e. Comparison with immediate preceding two years

2.3 University Toppers: if any and details

2.4 Institutional Academic Calendar

This should be published at the beginning of each academic year and should show the details like internal assessments, tentative examination date, University examinations, holidays for arts festival and other important events.

2.5 Continuing Educational Programs

These are meant for enhancement of awareness in the respective field of study/speciality. The number of external faculty, number of delegates from within and outside the institutions, number of credit hours from the respective councils/KUHS, a sample of certificate of participation issued may be included.

2.6 Seminars, Workshops, Conferences or others were conducted

These are State/National/International level programs meant for enhancement of awareness in the respective field of study/speciality, where there should be significant number of faculty and participants from outside the institution. The number of external faculty, number of delegates from within and outside the institutions, number of credit hours from the respective councils/KUHS, a sample of certificate of participation issued may be included. Programs of two days or more duration will be given more importance.

2.7 Teachers as Office Bearers of Professional Bodies

Office Bearers of state/National level professional bodies are to be considered. Service organisations and trade unions are not included.

2.8 Programs in Educational Technology

These are meant purely for enhancement of teaching quality. Standard curricula are to be followed. Accredited programs of national bodies like NTTC, MCI, NAAC, NABH etc. are to be given due importance.

3 STUDENT WELFARE

3.1 Co-Curricular Activities&Extra Curricular Activities

Co-Curricular Activities include debate, quiz, competitive examinations etc.

Extra-Curricular activities include Arts, sports, literature etc.

3.2 Placement programs

Facilitation of placement of the students in reputed institutions through placement cell of the Institution. The number of students thus placed and their employer are to be mentioned.

3.3 Programs for dealing with Poor Performers [Scholastic Backwardness]

The details of institutional policy and programs conducted for poor performers and low achievers are to be documented along with the outcomes.

3.4 Quality assessment of Classrooms, Labs, Clinical classes

Adequacy of teaching learning equipment, furniture, student comfort in the above areas including facilities in the examination hall.

3.5 Quality assessment of Common Rooms, Transportation, Toilets, Canteen

The numbers and cleanliness of the rooms and adequacy of vehicles and quality of food served in the canteen are to be considered.

3.6 Mentoring / Tutorial System

A student friendly mentoring system with a maximum of five students under a teacher may be useful. Periodicity of meetings between and the mentor and the mentees to be mentioned. Any special outcome may be mentioned

3.7 Grievance Redressal Programs

Establishment of Grievance Redressal units under the principal or designated faculty member and student support and guidance cell are to be considered.

4 KUHS PARAMETERS

4.1 Faculty Qualification & Numbers

As per the Regulations of KUHS or respective councils as applicable.

4.2 Academic Staff College Training status of Faculty are adequate

Number of faculty members trained under Academic Staff College of KUHS, or MCI/NTTC/FAIMER are to be specified.

4.3 Periodical Institutional Faculty Appraisal Programs

Whether feedback is taken from the students in structured format, analysed and necessary modifications effected in the Academic Programs/Departmental Administration

4.4 Faculty Development Programs

Quality improvement initiatives for teachers: In-house or extra institutional.

4.5 Disciplinary issues of Students/Faculty if any [give details]

Whether any serious issues of academic malpractice or personal misconduct were reported and whether effective remedial measures were taken.

5 INSTITUTIONALEXCELLENCE

5.1 Vision & Mission Statements of the Institution

To be displayed prominently at the Head Quarters Building

5.2 Awards & Achievements for the Institution [Details]

Especially Awards & Achievements of State/National/ International importance

5.3 Research, Publications, Patents, Projects of the Institution [Details]

Mention whether publications were in indexed journals or State/National/International/purely online journals. Impact factor to be mentioned.

5.4 Accreditations: University/NAAC/NABH/ NABL/NBA/ ISO [Details including validity period]

5.5 Funded Research projects

Details to be provided including whether they were multi centric.

Academic Monitoring Cell

Institutional Interface for filing of
Institutional Academic Committee
Report

INTRODUCTION

The Constitution and functions of Academic Monitoring Cell has already been described. The first tier of the AMC is in the Institutional Level and is termed the Institutional Academic Committee, which will monitor the Academic Activities of the Institution. The Chairman/Co-Chairman of this Committee has to file reports bi-annually through the Principals Portal of KUHS. A report will be generated upon successful E-Filing, which has to be filed along with application for continuation of affiliation and is mandatory. It should be uploaded after consensus with IAC.

Procedure for E- filing of Report of Institutional Academic Committee (IAC) (Internal Academic Audit Proforma)

Step-1: Accessing the Portal

Colleges can submit their internal academic audit Proforma through the KUHS Principal's Portal. The opening page is shown in figure -1 below.

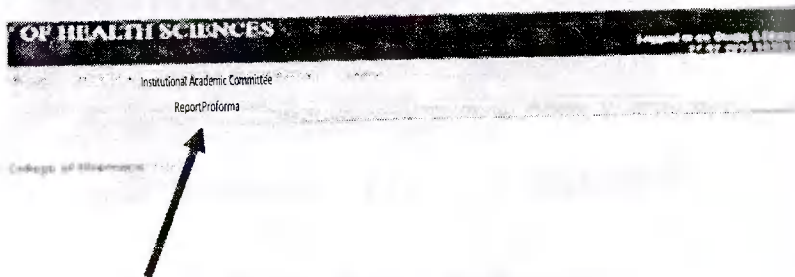


Figure -1

Step-2:

By logging on to the KUHS Academic Monitoring Cell Website it will be possible to view the drop down menu "Institutional Academic Committee Report Proforma" of AMC. All courses under the respective institution will be displayed [Figure 2]
Institutions have to submit one proforma for each course listed under their college.

Institutional Academic Committee Report

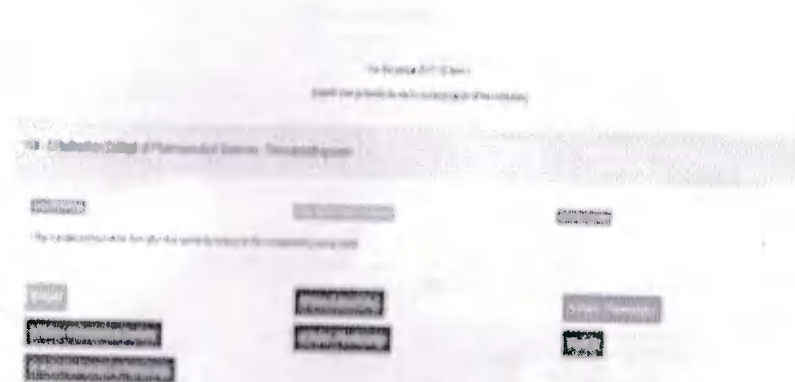


Figure 2

Step -3 Filling Up the Proforma

The Proforma can be filled by using toggle buttons. A toggle button is provided for each parameter of the Proforma.

They remain in the 'NO' position by default. It will have a Grey background in this position.

Slide the button to the Right, if required, and the background will change to green. [see Figure 3]

INTERNAL ACADEMIC AUDIT PROFORMA
For the purpose of internal academic audit, the proforma is provided for the use of the institution.
(The proforma is to be filled by the institution, programme or department)

Programme

1. Name of the Programme	<input type="radio"/>	2. Name of the Programme	<input type="radio"/>
3. Name of the Programme	<input type="radio"/>	4. Name of the Programme	<input type="radio"/>
5. Name of the Programme	<input type="radio"/>	6. Name of the Programme	<input type="radio"/>
7. Name of the Programme	<input type="radio"/>	8. Name of the Programme	<input type="radio"/>
9. Name of the Programme	<input type="radio"/>	10. Name of the Programme	<input type="radio"/>
11. Name of the Programme	<input type="radio"/>	12. Name of the Programme	<input type="radio"/>
13. Name of the Programme	<input type="radio"/>	14. Name of the Programme	<input type="radio"/>
15. Name of the Programme	<input type="radio"/>	16. Name of the Programme	<input type="radio"/>
17. Name of the Programme	<input type="radio"/>	18. Name of the Programme	<input type="radio"/>
19. Name of the Programme	<input type="radio"/>	20. Name of the Programme	<input type="radio"/>
21. Name of the Programme	<input type="radio"/>	22. Name of the Programme	<input type="radio"/>
23. Name of the Programme	<input type="radio"/>	24. Name of the Programme	<input type="radio"/>
25. Name of the Programme	<input type="radio"/>	26. Name of the Programme	<input type="radio"/>
27. Name of the Programme	<input type="radio"/>	28. Name of the Programme	<input type="radio"/>
29. Name of the Programme	<input type="radio"/>	30. Name of the Programme	<input type="radio"/>
31. Name of the Programme	<input type="radio"/>	32. Name of the Programme	<input type="radio"/>
33. Name of the Programme	<input type="radio"/>	34. Name of the Programme	<input type="radio"/>
35. Name of the Programme	<input type="radio"/>	36. Name of the Programme	<input type="radio"/>
37. Name of the Programme	<input type="radio"/>	38. Name of the Programme	<input type="radio"/>
39. Name of the Programme	<input type="radio"/>	40. Name of the Programme	<input type="radio"/>
41. Name of the Programme	<input type="radio"/>	42. Name of the Programme	<input type="radio"/>
43. Name of the Programme	<input type="radio"/>	44. Name of the Programme	<input type="radio"/>
45. Name of the Programme	<input type="radio"/>	46. Name of the Programme	<input type="radio"/>
47. Name of the Programme	<input type="radio"/>	48. Name of the Programme	<input type="radio"/>
49. Name of the Programme	<input type="radio"/>	50. Name of the Programme	<input type="radio"/>
51. Name of the Programme	<input type="radio"/>	52. Name of the Programme	<input type="radio"/>
53. Name of the Programme	<input type="radio"/>	54. Name of the Programme	<input type="radio"/>
55. Name of the Programme	<input type="radio"/>	56. Name of the Programme	<input type="radio"/>
57. Name of the Programme	<input type="radio"/>	58. Name of the Programme	<input type="radio"/>
59. Name of the Programme	<input type="radio"/>	60. Name of the Programme	<input type="radio"/>
61. Name of the Programme	<input type="radio"/>	62. Name of the Programme	<input type="radio"/>
63. Name of the Programme	<input type="radio"/>	64. Name of the Programme	<input type="radio"/>
65. Name of the Programme	<input type="radio"/>	66. Name of the Programme	<input type="radio"/>
67. Name of the Programme	<input type="radio"/>	68. Name of the Programme	<input type="radio"/>
69. Name of the Programme	<input type="radio"/>	70. Name of the Programme	<input type="radio"/>
71. Name of the Programme	<input type="radio"/>	72. Name of the Programme	<input type="radio"/>
73. Name of the Programme	<input type="radio"/>	74. Name of the Programme	<input type="radio"/>
75. Name of the Programme	<input type="radio"/>	76. Name of the Programme	<input type="radio"/>
77. Name of the Programme	<input type="radio"/>	78. Name of the Programme	<input type="radio"/>
79. Name of the Programme	<input type="radio"/>	80. Name of the Programme	<input type="radio"/>
81. Name of the Programme	<input type="radio"/>	82. Name of the Programme	<input type="radio"/>
83. Name of the Programme	<input type="radio"/>	84. Name of the Programme	<input type="radio"/>
85. Name of the Programme	<input type="radio"/>	86. Name of the Programme	<input type="radio"/>
87. Name of the Programme	<input type="radio"/>	88. Name of the Programme	<input type="radio"/>
89. Name of the Programme	<input type="radio"/>	90. Name of the Programme	<input type="radio"/>
91. Name of the Programme	<input type="radio"/>	92. Name of the Programme	<input type="radio"/>
93. Name of the Programme	<input type="radio"/>	94. Name of the Programme	<input type="radio"/>
95. Name of the Programme	<input type="radio"/>	96. Name of the Programme	<input type="radio"/>
97. Name of the Programme	<input type="radio"/>	98. Name of the Programme	<input type="radio"/>
99. Name of the Programme	<input type="radio"/>	100. Name of the Programme	<input type="radio"/>

Partial Entry

There is a facility for partial entry. The Proforma can be accessed at a later time for filling. In this situation, the legend as shown in Figure -2 will be displayed as below: [Figure 4]

Legend for colours:

Red	Entry not started by college
Yellow	Entry started but not completed
Green	Entry Completed

Figure 2(a)

INTERNAL ACADEMIC AUDIT PROFORMA
For the purpose of internal academic audit, the proforma is provided for the use of the institution.
(The proforma is to be filled by the institution, programme or department)

Programme

156 - B.Pharm [Lateral Entry], M.Pharm [P/C, P&P, Pharmacology]

157 - B.Pharm [Lateral Entry], M.Pharm [P/C, P&P, Pharmacology]

158 - B.Pharm [Lateral Entry], M.Pharm [P/C, P&P, Pharmacology]

159 - B.Pharm [Lateral Entry], M.Pharm [P/C, P&P, Pharmacology]

160 - B.Pharm [Lateral Entry], M.Pharm [P/C, P&P, Pharmacology]

161 - B.Pharm [Lateral Entry], M.Pharm [P/C, P&P, Pharmacology]

162 - B.Pharm [Lateral Entry], M.Pharm [P/C, P&P, Pharmacology]

163 - B.Pharm [Lateral Entry], M.Pharm [P/C, P&P, Pharmacology]

164 - B.Pharm [Lateral Entry], M.Pharm [P/C, P&P, Pharmacology]

165 - B.Pharm [Lateral Entry], M.Pharm [P/C, P&P, Pharmacology]

166 - B.Pharm [Lateral Entry], M.Pharm [P/C, P&P, Pharmacology]

167 - B.Pharm [Lateral Entry], M.Pharm [P/C, P&P, Pharmacology]

168 - B.Pharm [Lateral Entry], M.Pharm [P/C, P&P, Pharmacology]

169 - B.Pharm [Lateral Entry], M.Pharm [P/C, P&P, Pharmacology]

170 - B.Pharm [Lateral Entry], M.Pharm [P/C, P&P, Pharmacology]

171 - B.Pharm [Lateral Entry], M.Pharm [P/C, P&P, Pharmacology]

172 - B.Pharm [Lateral Entry], M.Pharm [P/C, P&P, Pharmacology]

173 - B.Pharm [Lateral Entry], M.Pharm [P/C, P&P, Pharmacology]

174 - B.Pharm [Lateral Entry], M.Pharm [P/C, P&P, Pharmacology]

175 - B.Pharm [Lateral Entry], M.Pharm [P/C, P&P, Pharmacology]

176 - B.Pharm [Lateral Entry], M.Pharm [P/C, P&P, Pharmacology]

177 - B.Pharm [Lateral Entry], M.Pharm [P/C, P&P, Pharmacology]

178 - B.Pharm [Lateral Entry], M.Pharm [P/C, P&P, Pharmacology]

179 - B.Pharm [Lateral Entry], M.Pharm [P/C, P&P, Pharmacology]

180 - B.Pharm [Lateral Entry], M.Pharm [P/C, P&P, Pharmacology]

181 - B.Pharm [Lateral Entry], M.Pharm [P/C, P&P, Pharmacology]

182 - B.Pharm [Lateral Entry], M.Pharm [P/C, P&P, Pharmacology]

183 - B.Pharm [Lateral Entry], M.Pharm [P/C, P&P, Pharmacology]

184 - B.Pharm [Lateral Entry], M.Pharm [P/C, P&P, Pharmacology]

185 - B.Pharm [Lateral Entry], M.Pharm [P/C, P&P, Pharmacology]

186 - B.Pharm [Lateral Entry], M.Pharm [P/C, P&P, Pharmacology]

187 - B.Pharm [Lateral Entry], M.Pharm [P/C, P&P, Pharmacology]

188 - B.Pharm [Lateral Entry], M.Pharm [P/C, P&P, Pharmacology]

189 - B.Pharm [Lateral Entry], M.Pharm [P/C, P&P, Pharmacology]

190 - B.Pharm [Lateral Entry], M.Pharm [P/C, P&P, Pharmacology]

191 - B.Pharm [Lateral Entry], M.Pharm [P/C, P&P, Pharmacology]

192 - B.Pharm [Lateral Entry], M.Pharm [P/C, P&P, Pharmacology]

193 - B.Pharm [Lateral Entry], M.Pharm [P/C, P&P, Pharmacology]

194 - B.Pharm [Lateral Entry], M.Pharm [P/C, P&P, Pharmacology]

195 - B.Pharm [Lateral Entry], M.Pharm [P/C, P&P, Pharmacology]

196 - B.Pharm [Lateral Entry], M.Pharm [P/C, P&P, Pharmacology]

197 - B.Pharm [Lateral Entry], M.Pharm [P/C, P&P, Pharmacology]

198 - B.Pharm [Lateral Entry], M.Pharm [P/C, P&P, Pharmacology]

199 - B.Pharm [Lateral Entry], M.Pharm [P/C, P&P, Pharmacology]

200 - B.Pharm [Lateral Entry], M.Pharm [P/C, P&P, Pharmacology]

Figure 2

Red

B.Pharm [Lateral Entry], M.Pharm [P/C, P&P, Pharmacology]

Pharm-D: Entry not started by college

Yellow

B Pharm Entry started but not completed

Green

M Pharm [Pharmaceutics] Entry Completed

Step 4: Submitting the proforma

Submitting the proforma is two step procedure. After initial entry user has to save the form and can edit the form before final submission.

A text box is provided against each parameter.

It is mandatory to fill the remark text box if the answer is 'NO'

Figure 5

Step 5: Taking printout

Users can take printout / download the completed form by clicking on the course name in green Colour (Figure 2)

-28-

Figure 6

Conclusion

AMC is an innovative initiative of KUHS to improve the academic performance of affiliated Institutions in a proactive manner. It is a powerful tool which can be employed by the institution to improve upon the existing levels of excellence, which will positively reflect upon its stature in the academic arena.

Support

For any technical support the following E-mail id may be used

academicmonitoringcell@kuhs.ac.in

dean.academic@kuhs.ac.in

Contact Number: 0487-2207751

Annexure I

University Order No.17383/Dean AC (B)/KUHS/2017 issued in this regard issued by the Registrar, KUH

KERALA UNIVERSITY OF HEALTH SCIENCES

Abstract

KUHS - Dean (Academic) - Academic Monitoring Cell – Constituted - Orders issued

OFFICE OF DEAN (ACADEMIC)

No. 17383/Dean AC (B)/KUHS/2017

Thrissur, Dated 30/12/2017

- Read: 1) Decision No. 17.10 of 17th Academic Council dated 03/11/2017
2) Decision No. 42.21 of 42nd Governing Council dated 20/11/2017
3) U.O. No. 1316/AC 1/Gen//A1/2017 dated 13/12/2017.

ORDER

As per KUHS Act 2010, Chapter II.6 (xx) the University has to monitor and evaluate the academic performance of the affiliated institutions. At present, the University has no effective mechanism to monitor the academic activities. There are several reported instances where the Regulations and University Orders of Academic nature are not implemented in time by the concerned institutions. This often results in genuine difficulties and consequent complaints from students regarding these. In view of this it was proposed to constitute a sub-Committee of the Academic Council representing all the seven faculties.

The proposal was placed before the 17th meeting of the Academic Council dated 03/11/2017 and the Academic Council vide decision No. 17.10 decided to constitute an Academic Monitoring Cell with Pro Vice Chancellor as Chairman, Dean, Academic as Convenor and Deans of various Faculties as members.

The Academic Council also resolved to authorize the Hon'ble Vice Chancellor to nominate Chairman of Board of Studies or member of Board of Studies or Member of Faculty as special invitees to the Academic Monitoring Cell on a case to case manner.

The minutes of the Academic Council was placed before the 42nd meeting of the Governing Council and the Governing Council vide paper read (2) above approved the minutes of the Academic Council. The decision of the Governing Council in approving the minutes of the Academic Council was implemented vide order read (3) above.

Academic Monitoring Cell shall meet on a quarterly basis and monitor the academic activities of the institutions. The guidelines regarding the functioning of Academic Monitoring Cell shall be formulated by the members. The members of the committee shall be paid TA and Honorarium as per rules.

The decision of the Academic Council is thus implemented. Orders are issued accordingly.

Sd/-

REGISTRAR

Annexure II

AC Agenda No. 17.10: - Constitution of Academic Monitoring Cell

As per KUHS Act 2010, Chapter II.6 (xx) the University has to monitor and evaluate the academic performance of the affiliated institutions. At present, we have no effective mechanism to monitor the academic activities. There are several reported instances where the Regulations and University Orders of Academic nature are not implemented in time by the concerned institutions. This often results in genuine difficulties and consequent complaints from students regarding these.

In view of this it is proposed that a sub-committee of the Academic Council representing all the seven faculties may be constituted, which should meet on a quarterly basis and monitor the academic activities of the institutions. This may be named 'Academic Monitoring Cell' with Dean, Academic as Convenor and chaired by Pro Vice Chancellor. This committee will also look into academic complaints from faculty, students and parents and suggest remedial measures to the Hon'ble Vice Chancellor and the same to be reported in the next Academic Council.

AC Decision: - The Academic Council decided to constitute an Academic Monitoring Cell with Pro Vice Chancellor as Chairman, Dean, Academic as Convenor and Dean of Faculties as members.

The Academic Council also resolved to authorize the Hon'ble Vice Chancellor to nominate Chairman of Board of Studies or member of Board of Studies/Member of Faculty as special invitees to the Academic Monitoring Cell on case to case manner.

Annexure III

Agenda No. 18.06- Constitution of Academic Monitoring Cell The first meeting of the Academic Monitoring Cell was conducted on 19/01/2018. It was suggested to constitute a two-tier system for functioning of Academic Monitoring Cell. Accordingly every institution shall have an Academic Monitoring Council which will be chaired by the Principal and co-chaired by the Vice-Principal. The Committee will have all Heads of Departments, Unit Chiefs, Course/Programme Co-ordinators as members. The Academic Monitoring Council will monitor the academic parameters specified by the Academic Monitoring Cell of the KUHS which is the upper tier. The Academic Monitoring Cell of the KUHS will monitor the functions of these councils in order to ensure compliance with the regulations and syllabi and the University Orders and guidelines issued from time to time. This will be done in a paperless manner through a software designed for the purpose by the KUHS IT section. These electronic reports will be filed online by the institutions through the Academic Monitoring Councils in 6 months intervals. This biannual certificate submitted to the KUHS will be mandatory for submission during the periodic KUHS inspections.

Decision: - Approved the proposal with following suggestion to include Vice Principal or HoD as Co-Chairman.

Annexure IV

GC AgendaNo.44.36: -

1. KUHS Staff Basic Life Support Training

It is proposed to conduct a workshop on Basic Life Support (BLS) for KUHS Administrative Staff. This will be conducted in collaboration with Government Medical College, Thrissur.

2. Health Check-Up for University Administrative Staff

It is proposed to conduct a Health Check-up for KUHS Administrative Staff. This will be conducted in collaboration with Government Medical College, Thrissur.

3. Academic Credit System (ACS)

The Academic Credit System has been presented before the 18th Academic Council (decision no.18.05) and was approved. Permission may be given for its implementation.

4. Academic Monitoring Cell (AMC)

As approved by the 42nd GC, the first meeting of the Academic Monitoring Cell (AMC) was conducted and the parameters have been worked out. This was presented before the 18th Academic Council (decision no.18.06) and was approved.

GC Decision:- The GC granted permission for implementation of item nos. 1,2,3 & 4