



AMALA COLLEGE OF NURSING

AQAR (2022-2023)



CRITERION 2 – TEACHING- LEARNING AND EVALUATION

Key Indicator 2.6 – Student Performance and Learning Outcome

Metric No. 2.6.3 - The teaching learning and assessment processes of the Institution are aligned with the stated learning outcomes.

SUBMITTED TO



National Assessment and Accreditation Council

Outcome Analysis of Graduate attributes (Pos)



Amala COLLEGE OF NURSING

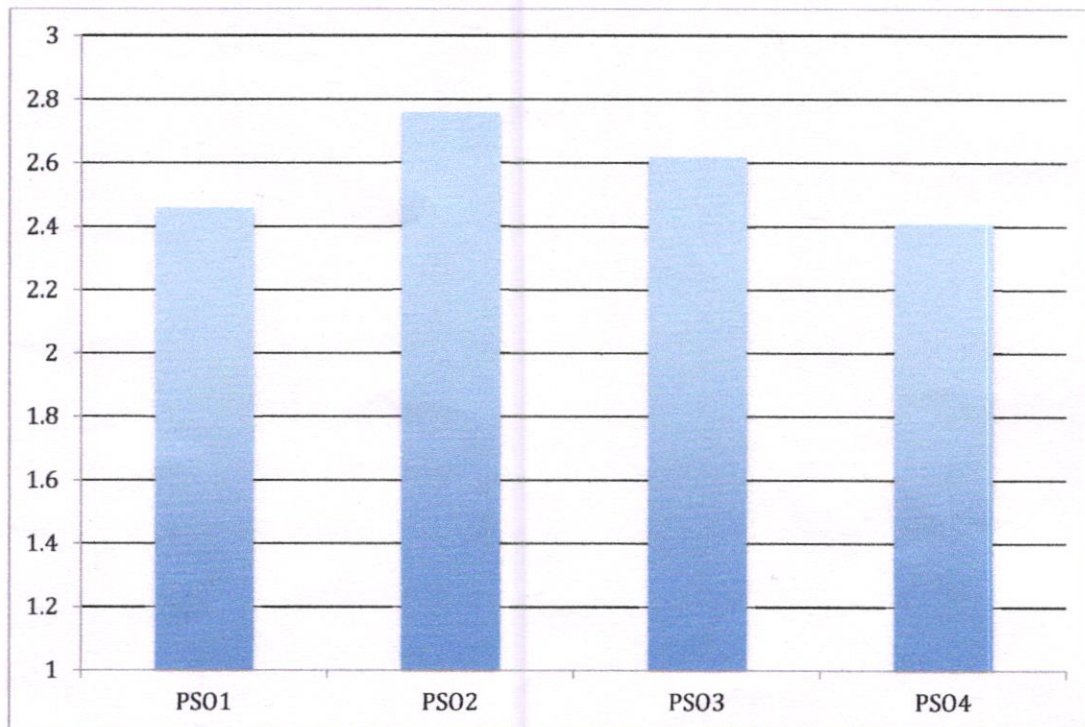
(An undertaking of Amala Cancer Hospital Society)

Amala Nagar, Thrissur – 680 555, Kerala

First Nursing College accredited by NAAC with A grade in the first cycle (RAF)

Affiliated to Kerala University of Health Sciences and recognized by Kerala Nurses and Midwives Council & Indian Nursing Council
(Certificate No. 18-16/2893-INC)

PSO- (Programme Specific Outcome) ATTAINMENT- 2018 BATCH



lqno
Prof. Dr. RAJEE REGHUNATH
PRINCIPAL

AMALA COLLEGE OF NURSING
AMALA NAGAR P.O., THRISSUR-680 555



Amala COLLEGE OF NURSING

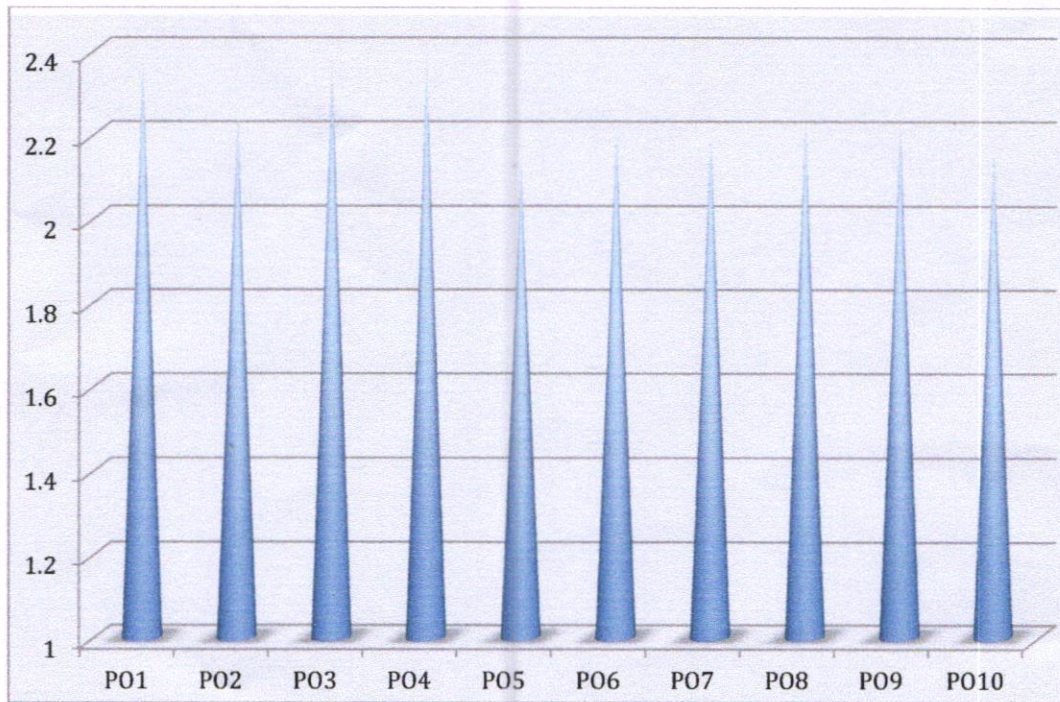
(An undertaking of Amala Cancer Hospital Society)

Amala Nagar, Thrissur – 680 555, Kerala

First Nursing College accredited by NAAC with A grade in the first cycle (RAF)

Affiliated to Kerala University of Health Sciences and recognized by Kerala Nurses and Midwives Council & Indian Nursing Council
(Certificate No. 18-16/2893-INC)

PO-(Programme Outcome/ Graduate Attribute) ATTAINMENT- 2018 BATCH



Regu



Prof. Dr. RAJEE REGHUNATH
PRINCIPAL

AMALA COLLEGE OF NURSING
AMALA NAGAR P.O., THRISSUR-680 555